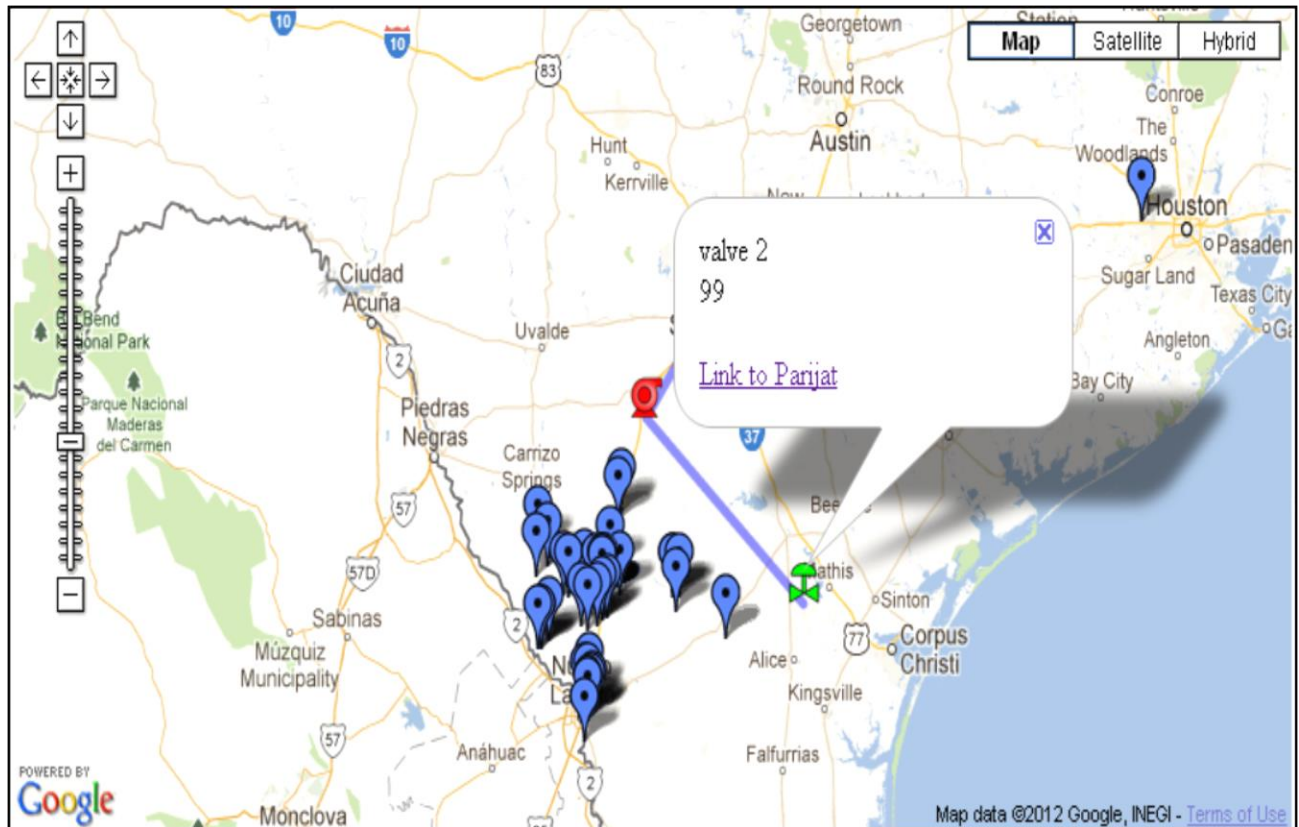


GIS (Geographic Information System) Application for HMI Objects

A web based application which overlays the HMI/SCADA objects like pumps, valves, meters and other smart industrial devices with changing real time values and essential updates on Google Maps or Microsoft Bing Maps using GIS coordinates. It can display the tag or data points from both the application database and Public or Local IP KML file(s) on a single Google Map object or MS Bing Maps at same time.



The above snapshot is from a sample application developed by Parijat. The solution is displaying different device types and device data, alarms, current status, exact GIS latitude/longitude location, etc.



Potential users of GIS & SCADA now do not have to rely on specialty GIS software solutions, as the same solutions are available from Google & Microsoft collaborating with PCI technology.

Features:	
Integration	It can be easily integrated with the existing web application.
Data Source	Can easily get connected to the database or web services in order to access real-time data.
Graphics	Customized Point icon image for HMI Objects, like valves, pumps and meters
	Different Icon images for a point according to the status of the object, like ON, OFF, Warning
Dynamic	Automatically updates and displays the point value and point icon status image.
	Updates the value in the info window without closing it.
Accessibility	Displays the KML file from the Public IP or the Local IP.
	Displays points from the database and from the KML file on the same Google Map object at the same time.
User Friendly	Easy to set the time span to update the value and object status image
Technology	Updates the HMI Object value and status image asynchronously using Ajax Update panel and JavaScript.
	Customizable info window with description text and links etc
Web browsers	Supports - IE, Google Chrome, Firefox and Safari.
Platform	It can easily be hosted on any .Net Framework supported web server. SQL Server 2005 or higher required.

In order to see a real application or live presentation and discuss a potential requirement of the mentioned solution please contact Parijat Controlware, Inc.

COPYRIGHT © 2012 Parijat Controlware, Inc. ANY OTHER LEGAL RIGHTS BELONG TO THEIR RESPECTIVE OWNERS. ANY USEAGE HERE IS ONLY FOR REFERENCE PURPOSE. CONTENTS SUBJECT TO CHANGE WITHOUT NOTICE