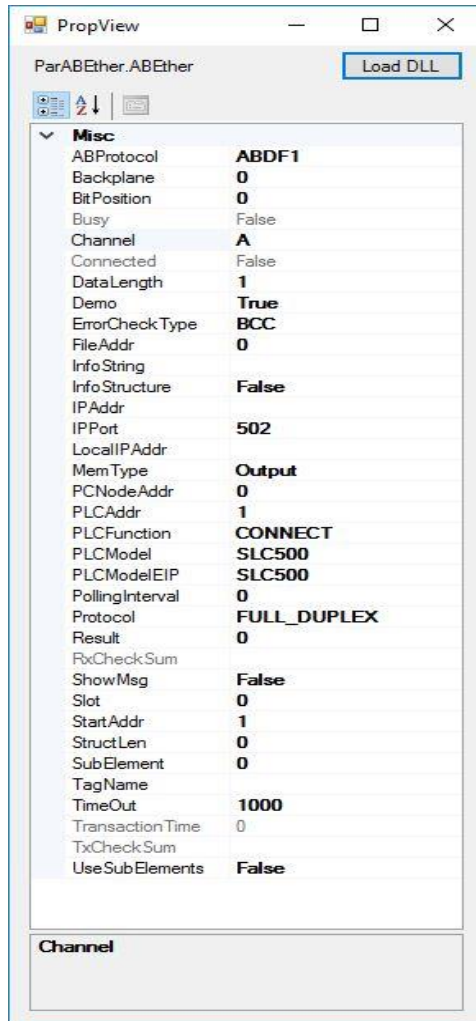


# Rockwell / Allen Bradley DF1 (CLGX/SLC/PLC5/micro) Serial Master

## Overview:

The Allen-Bradley DF1 Driver provides a reliable way to connect Allen-Bradley DF1 devices to MS Visual Studio, various HMI, SCADA, Historian, MES, ERP. This driver supports Allen-Bradley Micrologix, Controllogix, SLC500, and PLC5 series PLCs

## Properties Screen Shot:



## Features:

**Interface:** Serial Comm Port

**PLC Supported:** AB Controllogix, PLC 5, SLC50x family, via DF1 Full Duplex and half duplex serial protocol, (Channel 0/KE/KF2/KF3/multi drop etc.) Manipulate communication port parameters for flexible communications or with modems.

**Methods:** Open, Close, RefreshInfo, ClearDataBuffer

**Events:** OutCome (fires when a communication transaction completes), RXComplete, TXComplete

**Throughput:** Reads 100 consecutive registers @ 19.2k in 120 msec.

**Key words**  
Rockwell, Allen-Bradley, Micrologix, controllogix, PLC5

8/17/17

## For More Info

Overview of Parijat Drivers: [Click](#)

[Here](#)

Additional supporting Info about

Parijat Drivers: [Click here](#)

[Example of use of this product as HMI/SCADA](#)