

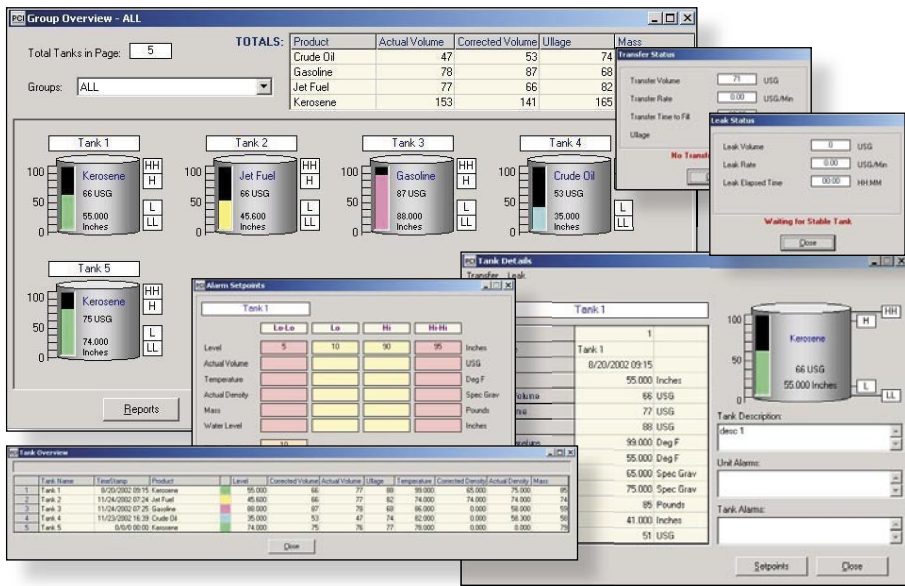
BULK STORAGE MANAGEMENT SOFTWARE

ATG Dataview

Series 3500 ATG System
Bulk Storage Management Software
for fuel storage applications

PubID: 23105

0a (5/04)



Features

- Supports up to 32 ATG devices per communication Port (Up to 255 communication ports)
- Auto-scan mode for automatic scanning all ATG devices
- Tank farm overview (tabular and graphical formats available at the same time)
- Tank Grouping for easy sorting
- Real-time updated detailed information for a selected tank (along with Transfer status and leak detection information)
- User selectable display colors for tanks and products
- Alarm viewer (Summary and Historical Modes) to view and acknowledge alarms
- Four Alarms per tank (High-High, High, Low, and Low-Low)
- Automatic and manual product inventory reporting
- Trending (real-time and historical data) with adjustable scaling
- Port monitor window, showing status of the serial communication to the ATG devices using Modbus
- Multi-level Secure Access with easy User setup (name, password, and access level)
- Uses Microsoft Access as the database
- May be customized to support other features and systems (Contact factory)

Requirements (minimum)

- Dedicated PC (Windows 98 SE, NT 4.0 PS6, 2000 SP3, or XP Pro)
- 500 MHz Pentium 128 MB RAM, 100 MB+0.5 MB/RTU available hard drive space
- 15-in or larger SVGA Monitor (800 x 600 minimum)
- Printer (Windows compatible) - color printer recommended

ATG Dataview is a management software package used with the Series 3500 ATG System for continuous monitoring of volume, level, density, mass, temperature, and other parameters in bulk fuel storage applications. In addition to highly accurate measurement, the system also provides automatic leak and transfer monitoring, inventory reporting, and data graphing for trend analysis.

Alarm Viewer



Alarms are displayed in either Summary or Historical mode.

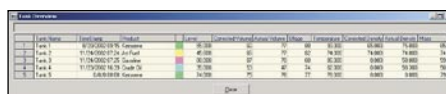
In **Summary mode**, all current alarms are displayed. In **Historical mode**, historical alarm data and acknowledgement times are displayed. The number of records displayed can be set by the user (up to 10,000 records).

Alarms can be sorted by Group using the "Group Select" drop down menu.

Alarms are acknowledged using either the All or Selected button. The All button will acknowledge all alarms, while the Selected button only acknowledges the alarm currently highlighted.

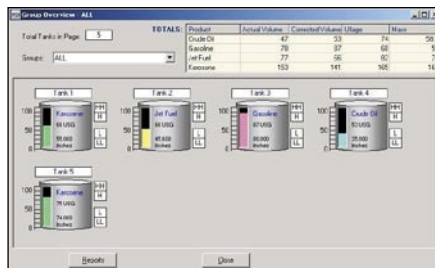
- **Status** (red indicates unacknowledged, yellow indicates acknowledged, and green indicates cleared)
- **Tag** (short name for alarm point)
- **Description** (full name/description)
- **Group** (used for sorting alarms)
- **Alarm Time** (time alarm event occurred)
- **Memo** (Comment area)

Tank Overview



The Tank Overview screen displays **real-time updated information** (in tabular form) for all monitored tanks. The information displayed for each tank includes: Tank Name, Timestamp, Product, Product Color, Level, Corrected Volume, Actual Volume, Ullage, Temperature, Corrected Density, Actual Density, and Mass.

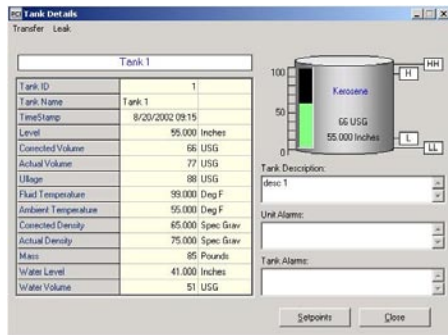
Group Overview



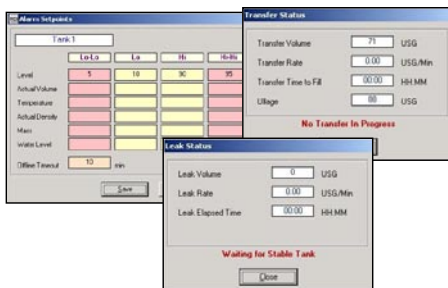
A **graphical representation** of Tank information. The "tank" images contain live data, while the "Totals" table (at the top) contains live total values for the products in the selected group. Clicking on a tank, brings up its' details screen.

When there is an alarm situation, the affected tank's alarm labels change color (Hi/Lo turn Yellow, while Hi-Hi/Lo-Lo labels turn Red).

Tank Details

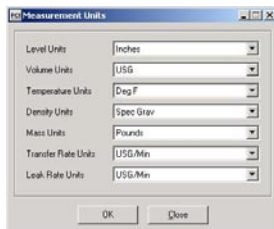


Detailed information on a single tank is easily accessible (along with **Transfer status**, **Leak status**, and **alarm setpoints** for the selected tank).



Units of Measure

Units of measure for displayed values can be easily set from a single dialog screen.



Products

Products can be added or removed quickly. Unique display colors can be chosen for each product.



Existing product information can be edited, using the Manual Mode screen.



Auto-Scan Mode

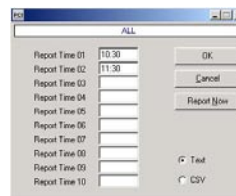
The Auto-Scan screen is used to setup and activate automatic scanning of all PLCs, up to the maximum value entered by user (1 to 247).



An indicator box (either green or red) shows the success or failure of each scan. The tanks ID would be automatically assigned to those PLCs that replied to the poll.

Report Configuration

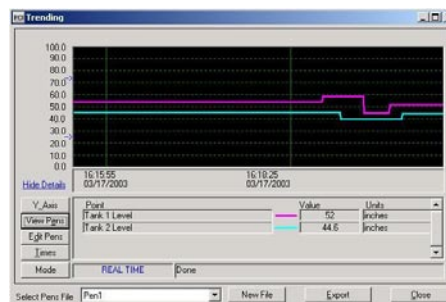
The user can set the report file type (**text** or **CSV**) and the times a report is generated. A "Report Now" button generates the report immediately.



Up to (10) reporting times can be set.

Report files are saved in a "Reports" folder, located within the ATG Dataview folder.

Trending



The Trending screen displays **graphical real-time or historical data** for selected points. Selected points can be assigned a unique color for easy identification. Up to 32 points can be added to a single set.

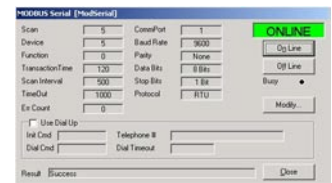
In **real-time mode**, trends are constantly updated from present time to some point in the past (similar to a strip-chart). The time scale of the X-axis can be entered.

In **historical mode**, stored data is displayed per the start and end times specified. Accurate time references can be obtained by clicking on the graph.

In both modes, the user can zoom the graph in and out (from 1 minute to 72 hours).

Port Monitor (serial communications to the ScadaPack PLC, using Modbus®)

The Port Monitor screen allows the user to enter communications settings and view the port status.



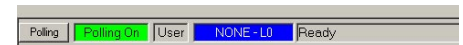
Any error that occurred during communications would be displayed in the Result field at the bottom of the screen.

The **Status indicator** at the top right shows current status, as either ONLINE, OFFLINE, or BUSY.

Communications can be started or stopped from this screen (using On Line or Off Line buttons).

Communications settings can be changed by clicking on the "Modify..." button.

Status Bar



At the bottom of the main application screen, there is a status bar that displays current polling, alarm, and user status.

The **Polling button** is used to manually turn polling on or off. The **polling status indicator** shows current polling condition (Green "Polling On" or Red "Polling Off").

The **Alarms status** field shows the number of unacknowledged alarms. Double-clicking on "UnAcked Alarms" brings up the Alarms screen.

The **User status** field indicates the user's login status. Double-clicking on the "User" field brings up the login dialog.

PRIME Measurement Products, LLC
 (Formerly known as Barton Instrument Systems)
 900 S. Turnbull Canyon Road
 City of Industry, CA, USA 91745
 Telephone: (626) 961-2547
 Fax: (626) 961-4452
 Email: info@prime-measurement.com
 Website: www.prime-measurement.com