

Parijat Controlware, Inc

Parijat .NET Components for Modbus

Desktop Windows or PocketPC/Windows CE

Modbus TCP Master

(DynamicProperties)	
(Name)	ModEtherMaster1
Busy	False
CFCCode	0
CFCEXpected	0
CFCMode	parCFCDisabled
Connected	False
DataLength	1
Demo	True
IPAddr	
IPPort	502
LocalIPAddr	
MemType	OutputCoils_0
Modifiers	Friend
PLCAddr	1
PLCFunction	READ
PollingInterval	0
Protocol	RTU
Result	0
ReverseBytes	False
RxChecksum	0
StartAddr	1
TimeOut	1000
TransactionTime	0
TxChecksum	0
UseDWORD	False
ZeroBased	False

(Name)
Indicates the name used in code to identify the object.

Modbus Serial Master

(DynamicProperties)	
(Name)	ModSerialMaster1
BaudRate	baud19200
Busy	False
CFCCode	0
CFCEXpected	0
CFCMode	parCFCDisabled
CommPort	1
Connected	False
CTSDelay	0
CTSEnable	False
CTSOutFlow	False
DataBits	dataBits8
DataLength	1
Demo	False
DSROutFlow	False
DTRMode	dtrEnable
LineControl	False
LineStatus	0
MemType	OutputCoils_0
Modifiers	Friend
Parity	parityNone
PLCAddr	1
PLCFunction	READ
PollingInterval	0
Protocol	RTU
Result	0
ReverseBytes	False
RTSMODE	rtsEnable
RTSOffDelay	0
RTSONDelay	0
RxChecksum	0

(Name)
Indicates the name used in code to identify the object.

Interface: TCP/IP.

Supported PLCs: Modicon PLCs, or any device emulating Modbus TCP slave.

Methods: PortOpen, Refresh CompareInfo

Events: Outcome (fires when communication transaction completes)

Throughput: Reads 120 consecutive words in 130 msec @ 19.2kB.

supports Modbus function codes

1,2,3,4,5,6,15,16. These codes are transparent to the user. Both ASCII & RTU modes are supported.

Interface: Serial master.

Supported PLCs: Modicon PLCs, or any device emulating Std, Enron or Honeywell Modbus slave.

Methods: Portopen, Refresh CompareInfo

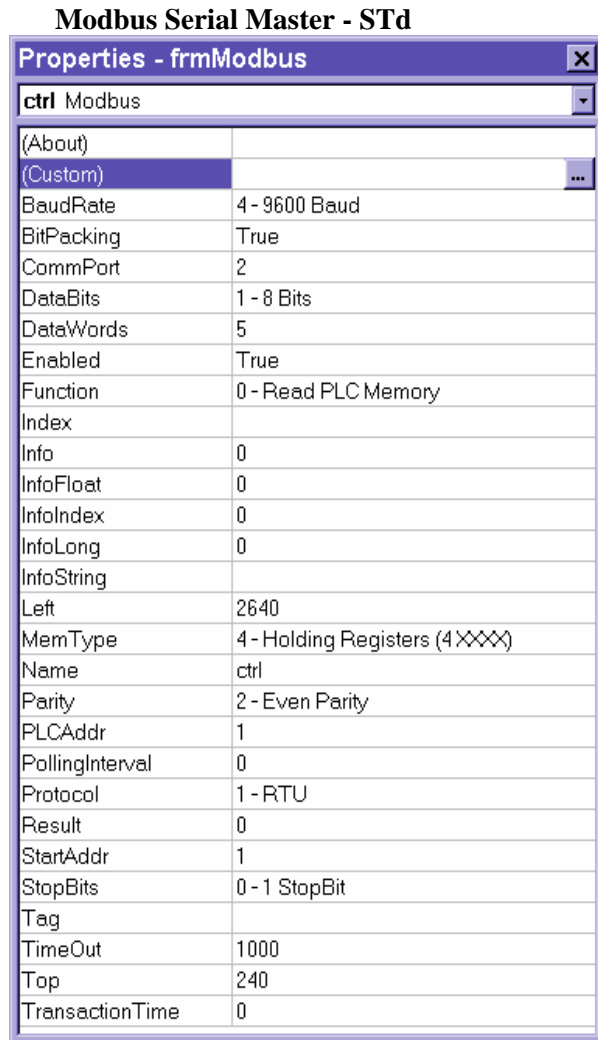
Events: Outcome (fires when communication transaction completes)

Throughput: Reads 120 consecutive words in 130 msec @ 19.2kB.

Supports ASCII & RTU, function codes 1, 2, 3, 4, 5, 6, 15, 16 and 1-255 custom function codes.

Advanced communications diagnostics & complete modem line status & control is built-in.

Parijat ActiveX Controls for Modbus



Interface: Serial master.

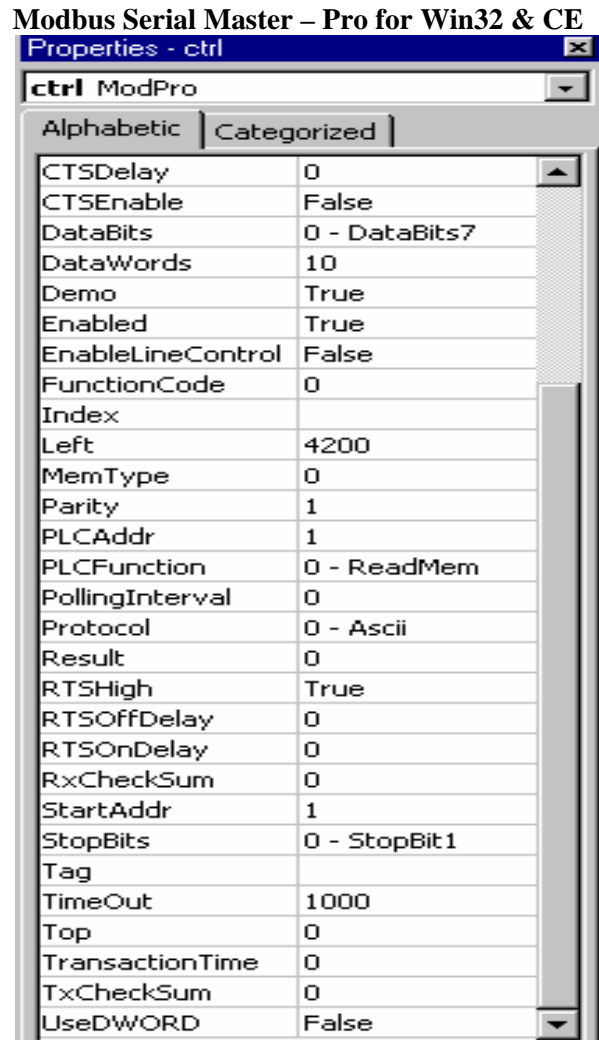
Supported PLCs: Modicon PLCs, or any device emulating Modbus slave.

Methods: PortOpen, Refresh CompareInfo

Events: Outcome (fires when communication transaction completes)

Throughput: Reads 120 consecutive words in 130 msec @ 19.2kB.

Active-X supports Modbus function codes 1,2,3,4,5,6,15,16. These codes are transparent to the user. Both ASCII & RTU modes are supported.



Interface: Serial master.

Supported PLCs: Modicon PLCs, or any device emulating Std, Enron or Honeywell Modbus slave.

Methods: Portopen, Refresh CompareInfo

Events: Outcome (fires when communication transaction completes)

Throughput: Reads 120 consecutive words in 130 msec @ 19.2kB.

Supports ASCII & RTU, function codes 1, 2, 3, 4, 5, 6, 15, 16 and 1-255 custom function codes.

Advanced communications diagnostics & complete modem line status & control is built-in. Version for CE is also available.

Modbus TCP/IP Ethernet Master

Properties - ctrl

ctrl ModEther

Alphabetic | Categorized

(Name)	ctrl
AdvancedDiag	False
BitPacking	False
CFCResponseBytes	17
CFCString	
Connected	False
DataWords	10
Demo	True
Enabled	True
EnableLineControl	False
FunctionCode	0
Index	
Left	4320
MemType	4
PLCAddr	1
PLCFunction	0
PollingInterval	0
Protocol	0
RxChecksum	0
StartAddr	1
Tag	
TimeOut	1000
Top	45

Modbus TCP/IP Ethernet Slave

Properties - ctrl

ctrl ModENSLv

Alphabetic | Categorized

(About)	
(Custom)	
(Name)	ctrl
AdvancedDiag	False
Busy	False
ClientCount	0
DataWords	5
DeviceType	0 - Modicon
Enabled	True
Index	
Left	3000
MaxIdleTime	0
MemType	0 - DiscreteCoils
PLCAddr	1
PLCFunction	0
Port	1001
Protocol	0 - Ascii
ResponseDelay	0
Result	0
StartAddr	2
Tag	
Top	150
WriteLocal	True

Interface: TCP/IP Ethernet master.

Supported PLCs: Any Modbus TCP/IP ethernet.

Methods: Refresh Connect CompareInfo

Events: Outcome (fires when communication transaction completes)

Throughput: Reads 100 consecutive words in 10 msec.

Supports Enron & Honeywell Modbus also. Both ASCII & RTU modes are supported with advanced communications diagnostics.

Interface: TCP/IP Ethernet slave.

Supported PLCs: Any Modbus TCP/IP ethernet.

Methods: Connect, GetAddrList, SetAddrList, Startserver, Stopserver

Events: Outcome (fires when communication transaction completes), Pre-receive,

Supports Enron & Honeywell Modbus also. Both ASCII & RTU modes are supported with advanced communications diagnostics.

Parijat Controlware, Inc.

1425 Blalock Suite 201

Voice (713) 935-0900

Email: Sales@parijat.com

Houston, Texas 77055 U.S.A.

Fax (713) 935-9565

Website: www.parijat.com