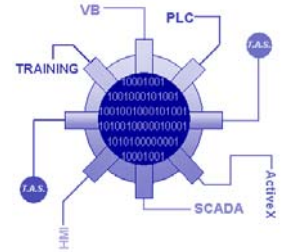


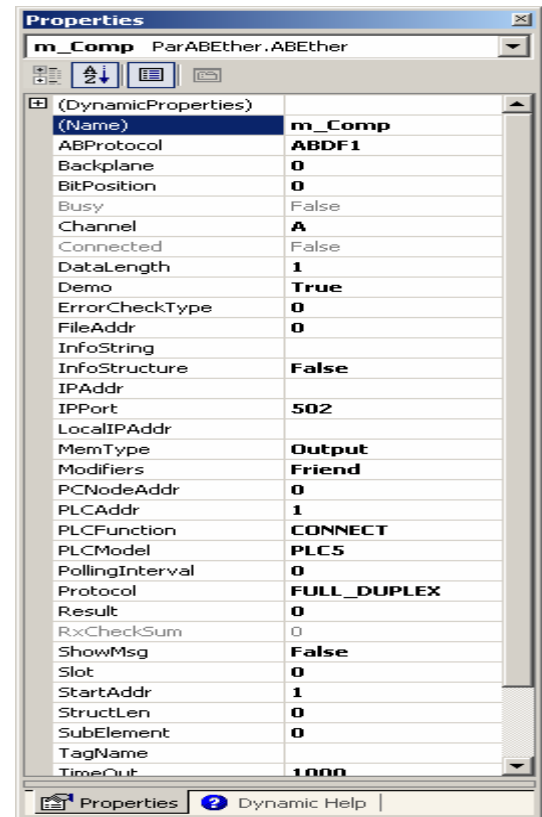
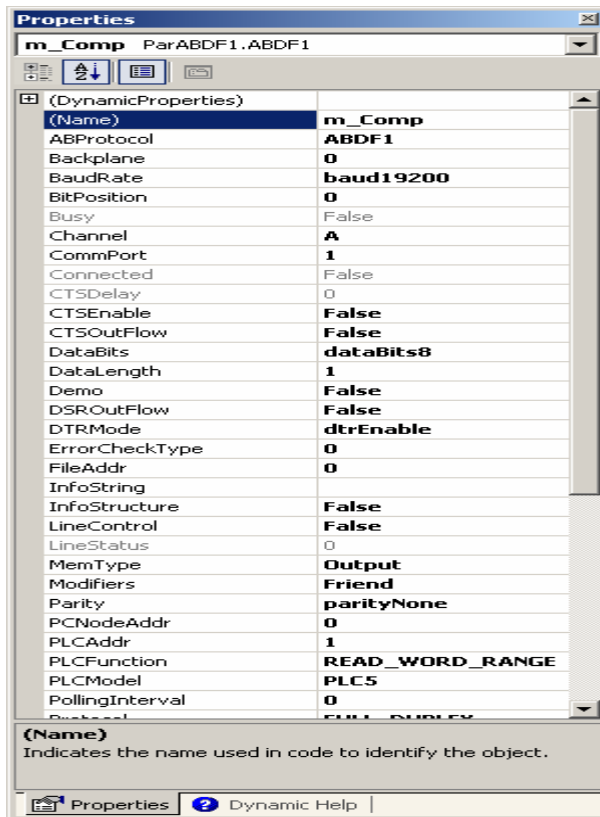
# Parijat Controlware, Inc



## Parijat .NET Components for Allen-Bradley

Desktop Windows or PocketPC/Windows CE

DF1(CLGX/SLC/PLC5/micro) Serial Master    TCP/IP Ethernet (CLGX/SLC/PLC5/micro)



**Interface:** Serial Comm Port

**PLC Supported:** AB Controllogix, PLC 5, SLC50x family, via DF1 Full Duplex and half duplex serial protocol, (Channel 0/KE/KF2/KF3/multi drop etc.)

Manipulate communication port parameters for flexible communications or with modems.

**Methods:** Open, Close, RefreshInfo, ClearDataBuffer

**Events:** OutCome (fires when a communication transaction completes), RXComplete, TXComplete

**Throughput:** Reads 100 consecutive registers @ 19.2k in 120 msec.

**Interface:** TCP/IP Ethernet Port, DHRIO, Net-ENI

**PLC Supported:** AB Controllogix, SLC505, via TCP/IP Ethernet built-in or Module port. Any device with Ethernet/IP protocol.

**Methods:** Open, Close, RefreshInfo, ClearDataBuffer

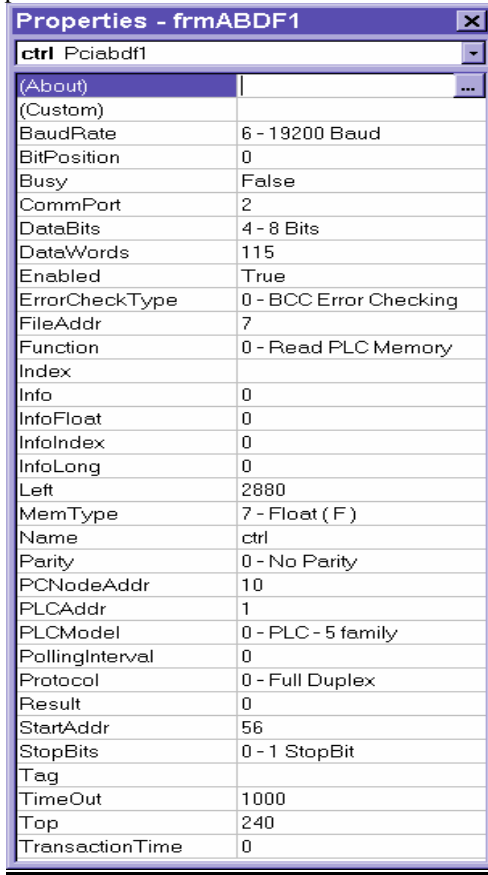
**Events:** OutCome (fires when a communication transaction completes), RXComplete, TXComplete

**General:** Also Supports unsolicited messages from SLC, Clogix family. Via DHRIO, access SLC & PLC5 data tables for read/write. Read or write most of the AB data types.

**Throughput:** Reads 100 consecutive registers @ 10Mhz in 40 msec.

# Parijat ActiveX Controls for Allen-Bradley

**DF1(CLGX/PLC5/SLC/MICRO) serial master**  
Desktop Windows & PocketPC/Windows CE



## Interface: Serial Comm Port

**PLC Supported:** AB Controllogix, Compactlogix, Flexlogix, PLC 5, SLC-500 or Micrologix family, via DF1 Full Duplex serial protocol, (Channel 0/KE/KF2/KF3/multi drop etc.)

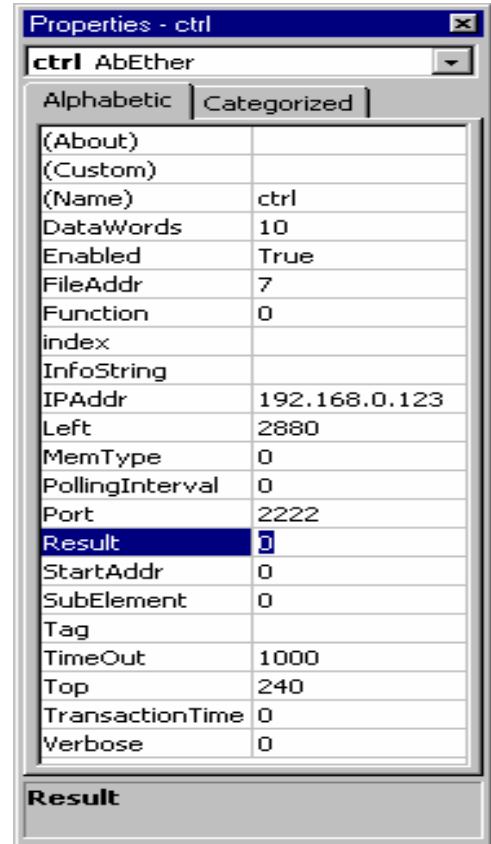
Manipulate communication port parameters for flexible communications or with modems.

**Methods:** PortOpen, Refresh, Compareinfo

**Events:** OutCome (fires when a communication transaction completes)

Throughput: Reads 120 consecutive words in 130 msec @ 19.2k

**TCP/IP Ethernet (CLGX/PLC5/SLC/Micro)**



## Interface: TCP/IP Ethernet Port

**PLC Supported:** AB Controllogix, Compactlogix, Flexlogix, PLC5 or SLC505, via TCP/IP Ethernet built-in or Module port.

**Methods:** Refresh, Compareinfo.

**Events:** OutCome (fires when a communication transaction completes)

Throughput: Reads 400 consecutive registers in 40 msec.

# Parijat ActiveX Controls for Allen-Bradley

DH+ via 5136-SD (PLC5/SLC)

Properties - frmPCIABSS	
ctrl ABSS	
(About)	...
(Custom)	
BaudRate	0 - 57.6 KBaud
BitPosition	0
CardName	NewDriver
DataWords	5
Enabled	True
FileAddr	7
Function	0 - Initialize Card
Index	
Info	0
InfoFloat	0
InfoIndex	0
InfoLong	0
Left	3120
MemType	0 - Output (O)
Name	ctrl
PCNodeAddr	32
PLCAddr	56
PLCModel	1 - SLC - 500 family
PollingInterval	0
Result	0
StartAddr	150
Tag	
TerminalName	COMP
TimeOut	1000
Top	240
TransactionTime	0
UnSolicitCheckTime	0

**Interface:** S-S Technologies' 5136-SD card  
**PLC Supported:** PLC 5, SLC-500 family, via Data Highway+.  
**Methods:** Refresh, Compareinfo  
**Events:** OutCome (fires when a communication transaction completes)

DH+ via 1784-KTx/D (PLC5/SLC)

Properties - frmABKTX32	
ctrl Abktx32	
(About)	...
(Custom)	
CardName	KTXCard
DataWords	10
Enabled	True
FileAddr	7
Function	0 - Connect
index	
Left	2880
MemType	0 - Output
Name	ctrl
PCNodeAddr	63
PLCAddr	1
PollingInterval	0
Result	0
StartAddr	0
Tag	
TerminalName	COMP32
TimeOut	1000
Top	240
TransactionTime	0
Verbose	0

**Interface:** Allen-Bradley 1784-KTx/D card, PCMK  
**PLC Supported:** PLC 5 or SLC, via Data Highway+  
**Methods:** Refresh, Compareinfo  
**Events:** OutCome (fires when a communication transaction completes)  
**Unsol\_read, Unsol\_write.**  
 Throughput: Reads 120 consecutive registers in 80 msec.

## Parijat Controlware, Inc.

1425 Blalock Suite 201  
 Voice (713) 935-0900  
 Email: Sales@parijat.com

Houston, Texas 77055 U.S.A.  
 Fax (713) 935-9565  
 Website: www.parijat.com